

**SmartAccess®** This can be determined by different access level of security for employees and visitors.



- Increases the safety of employees and students when entering the campus
- Helps prevent strangers from slipping in undetected
- Reduce chaos of after classes

**SmartLibrary®** A system used to manage the catalogue of a library. This helps to keep the records of whole transactions of the books available in the library.



- Quicker cataloging of library items
- Easier Access
- Helps keep the library's collection more stream lined and easier to find the right item.

**SmartPay®** Integrated cashless payments for Office, Canteens, Vending machines, Parking and more.



- Increased security for both vendors and customers
- Offers greater efficiencies, with tap-and-go
- Eliminate cash handling costs
- Positive cash flow

**SmartPark®** Lets you control entrance and exit rights for vehicles with all of the settings you desire for optimum security and efficiency.



- Improves parking capacity utilization
- Prevents unauthorized access and human intervention
- Streamlines parking entry and exit
- Saves time and frustration

**SmartEvents®** Helps reduce the administrative costs and overhead in event management by automating check-in, visitor identification, and registration processes for both event organizers and attendees.



- Improved business efficiency for venue owners, event organizers, exhibitors, and attendees
- Improved targeted marketing
- Reduced labour and registration costs

**SmartAsset®** Helps track, monitor, maintain your assets, equipment, tools with higher efficiency. Our SmartAsset offers increased visibility in real time monitoring of goods.



- Keep track of IT contracts and get notified about their expiry in advance.
- Lessen allotted time for manual counting of goods
- Track critical components and materials used for accurate reporting.

**SmartCare®** Is a Skill Management Module which helps to automate the human resource, skill development and management of all personnel working within the SmartZone®.



- Reduction in claims, time away from work, and overtime
- Improved service quality and satisfaction
- Increased security for patients/students

**SmartVendo®** Vending machine provides a sound source of revenue for educational institutions while very conveniently providing all the needs of a student at any time of the day.



- Freedom of Choice
- Low maintenance
- Saves them time from waiting on long canteen queues
- Better efficiency
- They're affordable

**SmartRoom®** It's an automation of attendance in classroom using smartID. Recommended for big universities to trace the time in and out of the students for every subject/period.

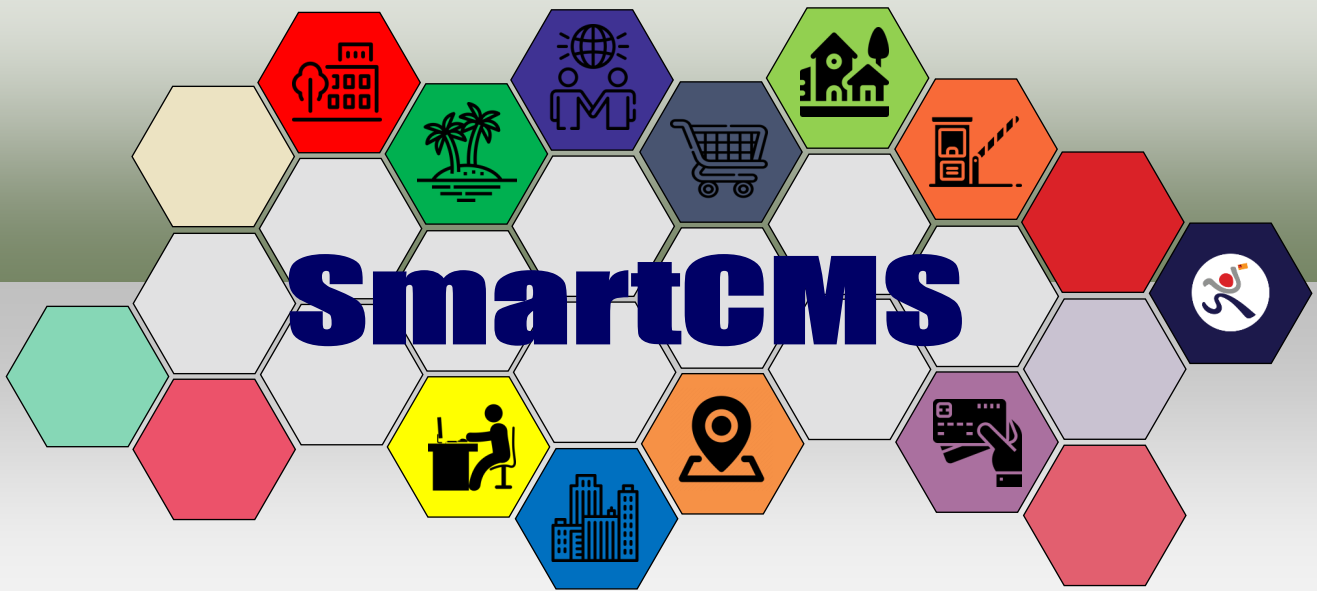


- Track student absences
- Help students return to class

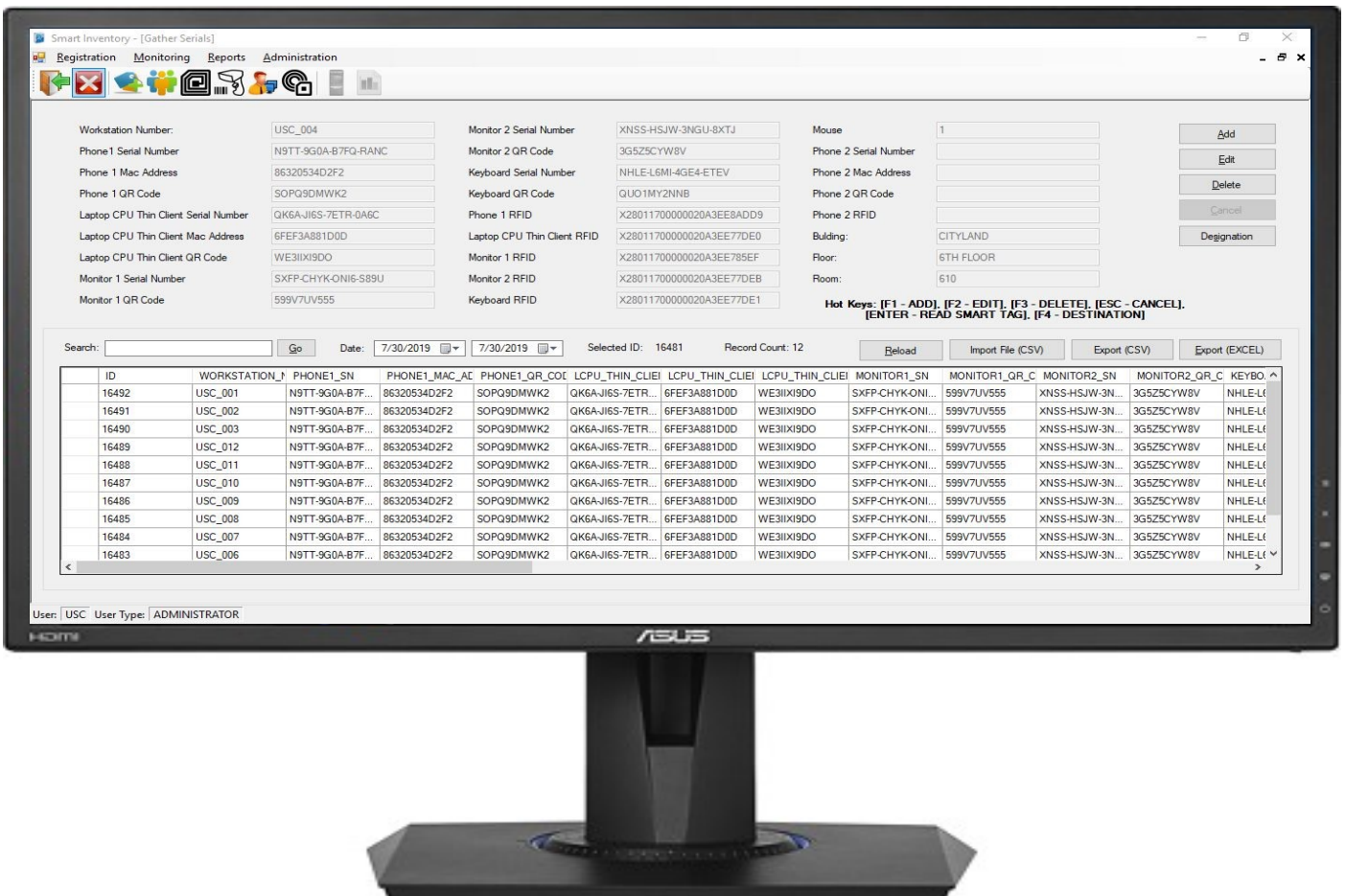
**SmartKiosk®** Digital information to staff and department locations. It's an interactive way finding directories guide user and answer specific inquires such as department hours, registration information and services.



- Manage database for school activities
- Add, edit, delete activities per semester
- Provide quick access of information
- Create user friendly system



The **SmartCMS®** software is the core system for all SmartSolutions® functional modules. It has a dashboard to manage the enrollment of both manpower and assets, personalization of their data and information, database management, reports and many more. It is a modular plug and play system which allows seamless integration of any other SmartSolution® Module depending on the user's requirements. The SmartCMS® has a customizable, intuitive and powerful UI which can be connected to a plethora of devices like RFID readers, Barcode/QR scanners, desktop readers and more:



: (02) 638-5546



: [info@theunlimitedsolutions.com](mailto:info@theunlimitedsolutions.com)



: [www.theunlimitedsolutions.com](http://www.theunlimitedsolutions.com)